



Water Flow

Flow Switch-Piston Type

Economic high anti-fouling
Flow measurement switch

FPC04

| Feature |

- Housing : Plastic / Stainless Steel, Protection Rating IP65
- Pressure resistance 100bar (Stainless steel)
- Minimal pressure loss, good repeatability, dirt-resistant high switch capability

| Description |

Mechanical flow switch for liquid or gaseous media, with spring-supported piston and magnetic triggering of a reed switch. Rugged design in plastic or brass.



“

Application :
Automated industry
Equipment
Air compression industry
Refrigeration & Air conditioning

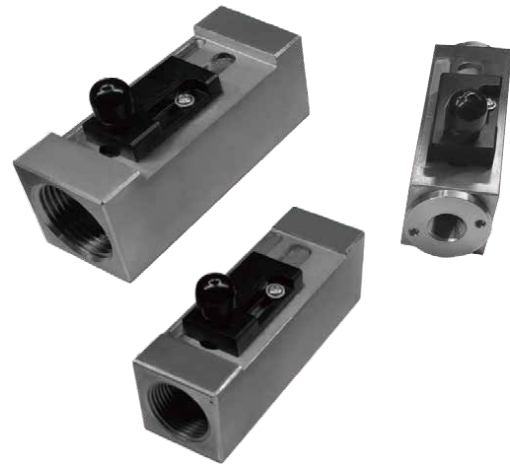
”

| Housing |

Plastic



Stainless steel



| Specification |

Range	Table 1 below	Pressure / Flow / Range
Accuracy	Accuracy	The total range $\pm 5\%$
Hysteresis	L / min	Depending on switching point, minimum 0.6 L/min
Switch setting scale	According to media distinction	Media : Water · Temp. : 20 °C · The standard state is set in the horizontal installation state. Installation position, media, and temperature changes have a slight effect on the switching value.
Media measured	Liquid / Gas	Water, Oil, Gas
Wiring	Connector	M12
Output	Reed switch	Capacity 24 VDC / 250 VAC, 100 mA
Pressure resistance	Unit : bar	Stainless steel : 100 bar, Plastic : 10 bar
Average pressure loss	L / min	0.3 bar (in 25 L/min)
Medium Temp.	°C	Max : 90 °C
Protection rating	IP	IP65
Material	Plastic / Stainless steel	Housing : Plastic / Stainless Steel, Piston : Plastic, Spring : Stainless Steel, Seal : NBR
Electrical connector	M12	with 2 m cable

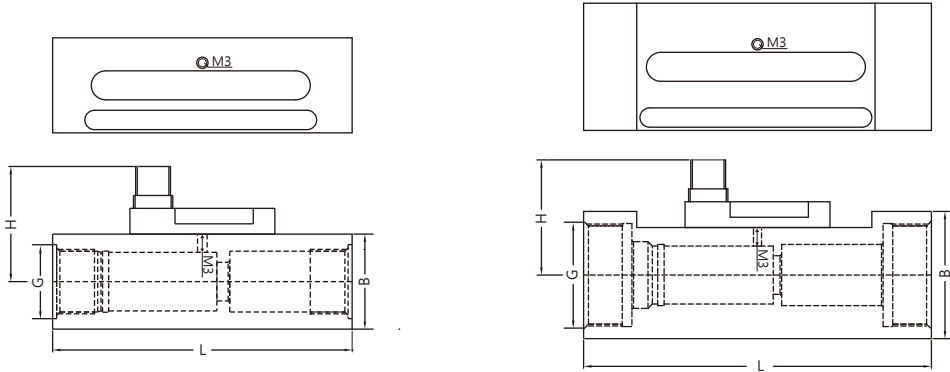
<Table 1>

ITEM	Flow(Max)	Range	G	L	H	B	X	Weight(g)	
	L/min(water)	L/min(water)	mm	mm	mm	mm	mm	Metal	Plastic
DN010	40	0.6 ... 8	G 3/8	93	36	30	15	445	88
DN015	40	0.6 ... 8	G 1/2	93	36	30	15	445	88
DN020	40	1 ... 15	G 3/4	105	36	35	15	860	165
DN025	40	1 ... 15	G1	105	36	40	15	860	165

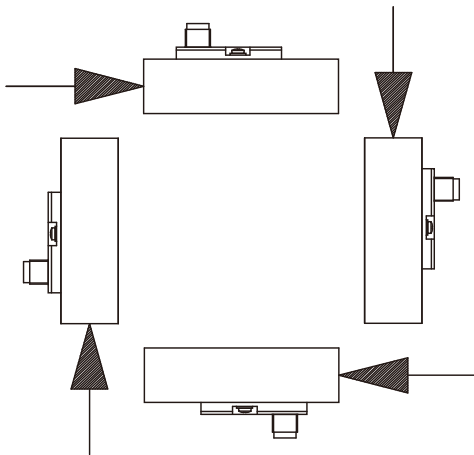
Water Flow

Flow Switch-Piston Type

| Dimension |

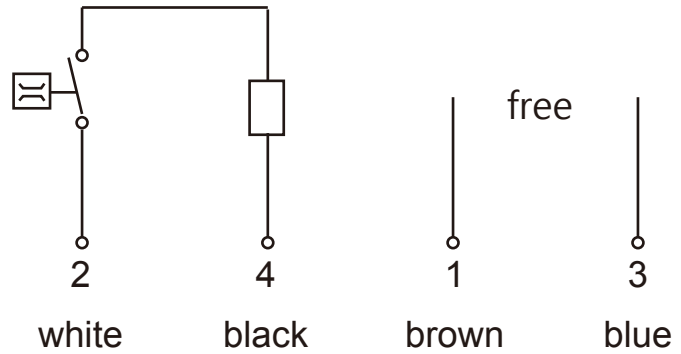


| Installation |



Installation position may influence switch value

| Diagram |



| Ordering Guide |

Threaded interface	Inside Screw thread	Housign material	Range
FPC04 - 010	G	S	015
010 Threaded interface G3/8			008 0.6 ... 8 L/min
015 Threaded interface G1/2			015 1 ... 15 L/min
020 Threaded interface G3/4			
025 Threaded interface G1			
		P Plastic	
		S Stainless steel	