

SD05

Integrated Signal Indicator



APPLICATIONS

Features

- SD05: 330° turnable; the direction of panel is changeable; good monitoring angle without blind corner.
- Programmable, display value can be set according to sensor's spec.
- Integrated display connected with 2-wire transmitter. Suitable for the on-site application.
- The power is from 2-wire signal loop, no extra power supply is required, easy to install.
- Programmable by pressing 2 buttons, easy to operate.
- High performance, good stability and functionality.

Applications

- With extensive applications as process monitoring in semiconductor industry, steel industry, chemical industry, environmental engineering, food processing, pharmaceutical industry, water plants, power plants, research and development, etc.

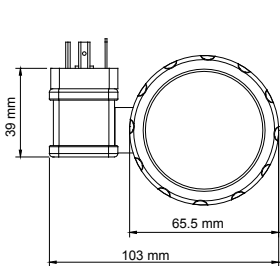


※ EYC SD05 fit for other kinds of transmitter

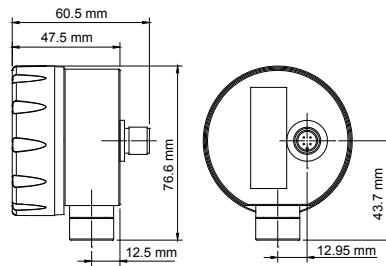


Installation Method	Display	Input Signal	Power Supply	Connector
05 : Integrated-type	1 : LED	1 : 4~20mA	0 : 2-wire loop power	H : DIN43650 M : M12

DIMENSION



DIN43650 Connector



M12 Connector

TECHNICAL SHEET

INPUT

Input signal 4~20 mA DC
 eg: pressure / differential pressure / temperature
 / flow / PH value / load cell, etc.
 Parameter setting programmable by pressing the button

OUTPUT

Display method 4-digit LED (height of word: 9.2mm)
 Display range -1999 ~ +9999
 Scale decimal point, programmable
 Display accuracy 0.2 % F.S.
 Voltage drop 3.3 VDC
 Overload current 40mA DC

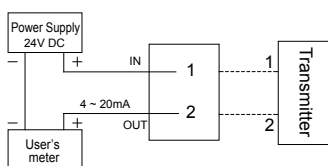
POWER SUPPLY

Power 4~20mA, 2-wire loop power
 Electrical connection DIN 43650 plug / M12 connector

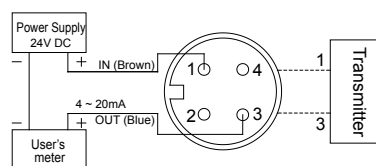
ELECTRICAL REGULATION

Electrical connector DIN43650 P9
 Protection degree IP 65
 Electrical protection polarity protection
 Environmental temperature -20°C~75°C
 Rotating angle DIN 43650: 330° / M12: 210°
 Body ABS(UL94V-0) + PC(UL94V-2)
 Weight H: 125g / M: 127g

CONNECTION DIAGRAM



DIN43650 Connector



M12 Connector